

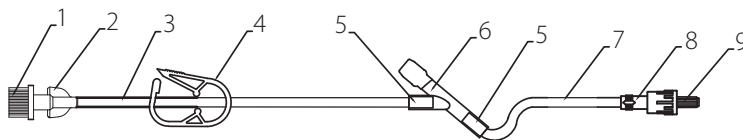
KRUUSE Microbore Extension Line with Y-injection Site

Tailor your fluid equipment set-up to small patients and volumes.

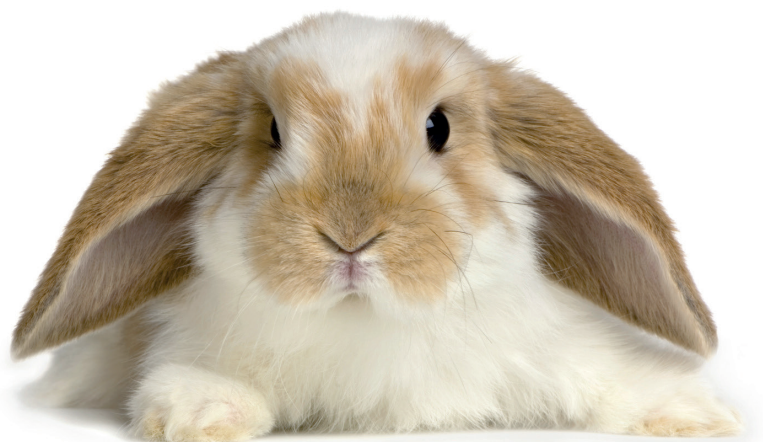
Fluid therapy is important for many medical conditions in veterinary patients. Fluid therapy is dictated by the patient's needs, including volume, rate and fluid composition. Needs may vary according to the existence of either acute or chronic conditions and patient pathology.

Fluid therapy must be individualised, tailored to each patient, and constantly re-evaluated and reformulated according to changes in patient status.

- Suitable for small patients and small volumes
- Extra access point allows treatment during infusion
- Minimising risks of phlebitis by reducing direct contact with the IV access point
- Easy attachment by transparent rotating Luer Lock



1. Protective cap
2. Female Luer Lock
3. Tubing - 1440 mm OD 2.5 mm ID 1.3 mm
4. Robert clamp
5. Tubing - 10 mm OD 3.9 mm ID 2.4 mm
6. Y-Injection site
7. Tubing - 300 mm OD 2.5 mm ID 1.3 mm
8. Rotary male Luer Lock for microbore
9. Protective cap



Cat. No	Description	Size, Metric	Size, Imperial	Priming Volume	Package
230169	KRUUSE Microbore Extension Line with Y-injection Site	75 cm	30"	1.2 ml	50/pk
230168	KRUUSE Microbore Extension Line with Y-injection Site	175 cm	70"	2.6 ml	50/pk